

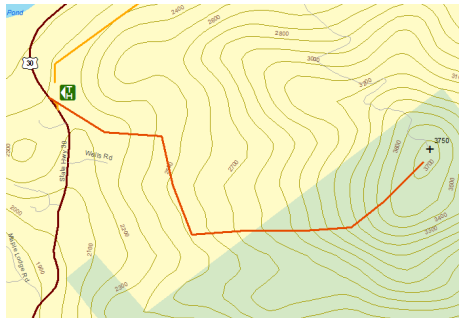


Scenic and Destination Hikes Central Adirondack Association Region

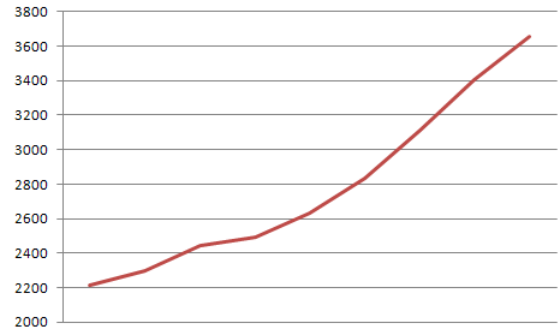
Blue Mountain

2-D view

Starting Point: State Rt 30, about 1 ½ miles north of Rt 28 & Rt 30 intersection in Blue Mt. Lake (10 miles from Long Lake town hall heading south)



Elevation profile (ft.)



Length: 4 miles round trip
Difficulty: Challenging

This trail provides an interesting day hike to the summit of beautiful Blue Mountain. The mountain's elevation is 3759 feet, making it one of the higher mountains in the area. There is an observation tower on top of the mountain. The sensational view at the summit is well worth the effort with vistas spreading before you which include the high peak area to the northeast. The trail is a tough walk and is not recommended for small children. Please stay on the trail as it crosses private land in places.

~

Important Note: The majority of trails in our interactive web map have not been GPSed. They are close representations of the actual trails, but should not be used for precise navigation. Please use common sense when following the trails included in this website.

Please be careful when hiking. Stay on trails. Sign registers whenever possible. Always let someone know where you are going and when you expect to return.

Check weather reports and plan your hikes carefully so you'll have plenty of time to get home before dark.

Be prepared for emergencies. Someone in the party should bring along a compass and map or guide book, a pocket knife, waterproof matches and firestarter, extra high-energy food, a first aid kit, flashlight, space blanket or small tarp, nylon cord and extra protective clothing.

Wear proper clothing for unexpected changes in the weather

Please don't litter.

Stay calm. If you become lost, keep warm and stay where you are. If you feel you can find your way out, remember that following streams downhill will usually lead you closer to habitation.

Emergency calls: Cell phone coverage can range from spotty in a few areas to non-existent almost everywhere else. Do not rely on your cell phone.

Thanks for using www.nyrecwebmap.com, enjoy your hike!